

# HOME PORT OF GLOBAL MAJORS



[www.besiktasshipyard.com](http://www.besiktasshipyard.com)

 **BesiktasShipyard**



# SHIPREPAIR

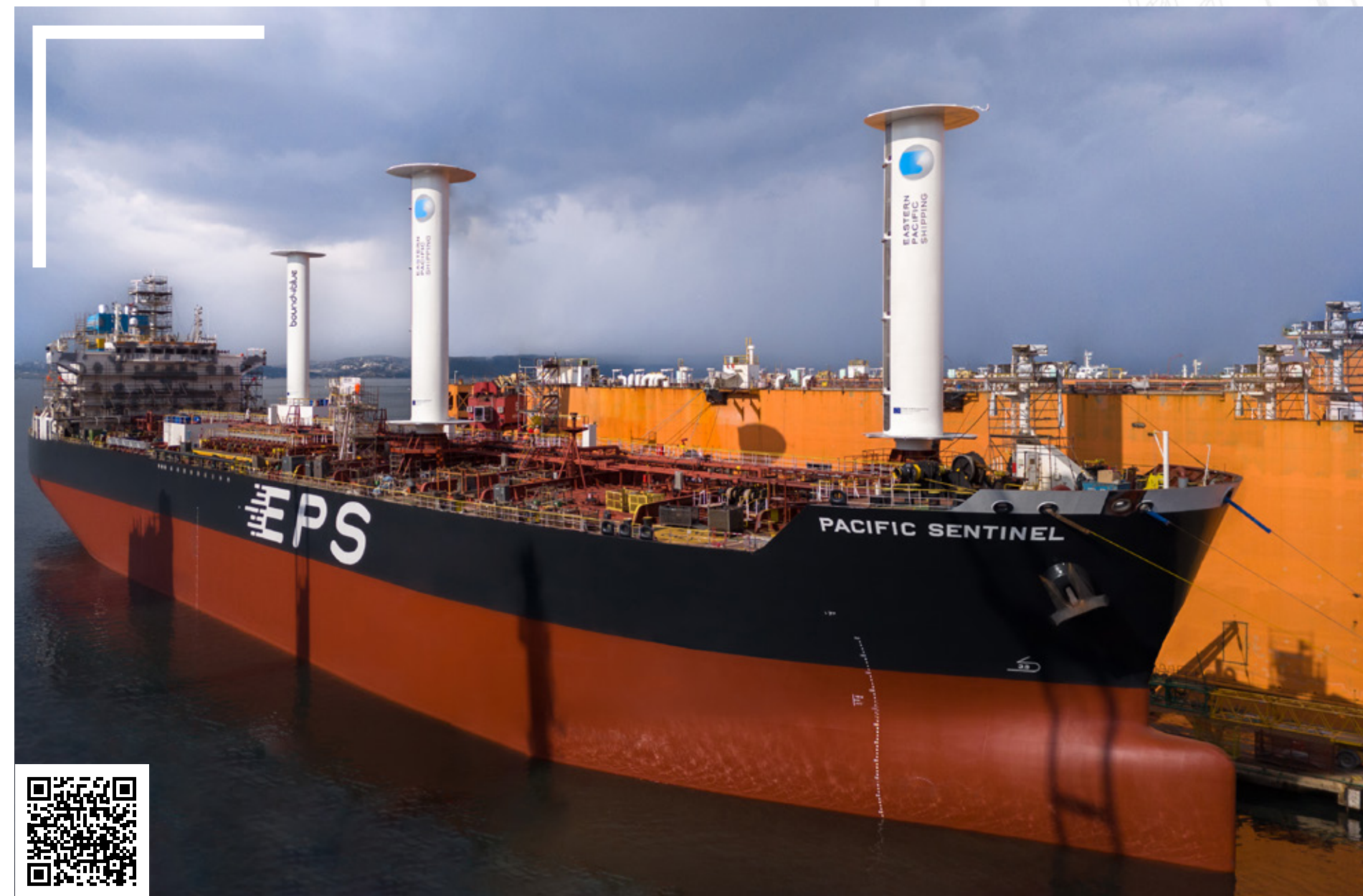
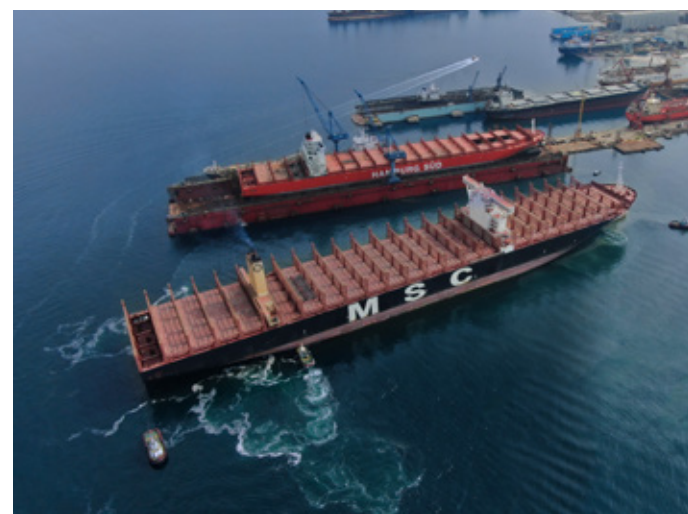
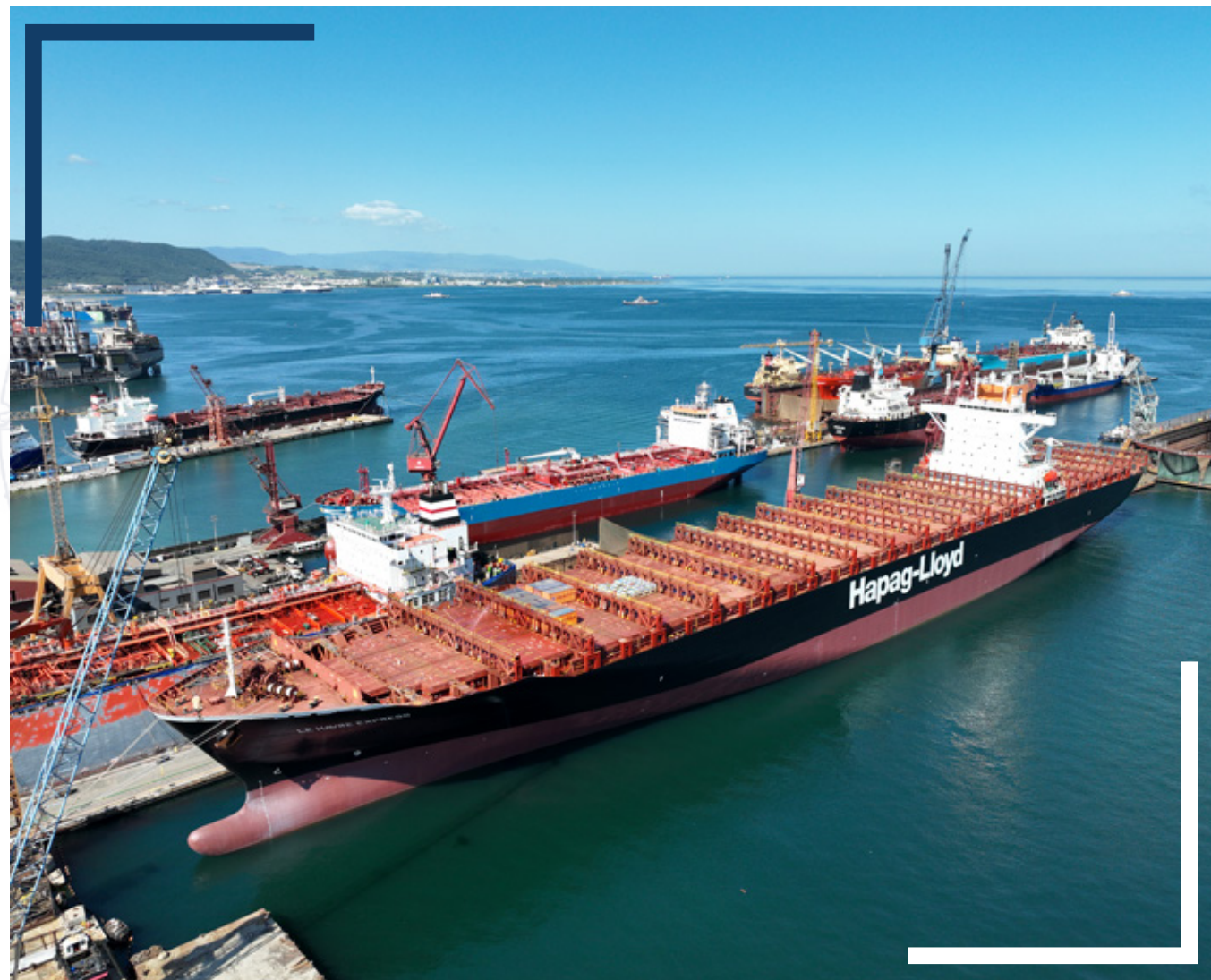


- Most active ship repair yard in Europe.
- 150 ship repair projects annually, from over 30 different countries.
- Completed more than 2,000 sophisticated ship repair projects since its establishment.
- The yard can accommodate up to 15 vessels simultaneously, including:
  - VLCC / Suezmax Tankers
  - Capesize / Newcastlemax Bulkers
  - Q-Max size LNG Carriers
  - Container vessels up to 15,000 TEU
  - FSRU / FPSO units
- Dock capacities include:
  - Floating Dock 1: 382 x 58 m
  - Floating Dock 85.000 T: 345 x 70 m
  - Graving Dock: 235 x 40 m



Cruise Ships & Ropax Vessels from Celestyal, Minoan Lines & Clipper





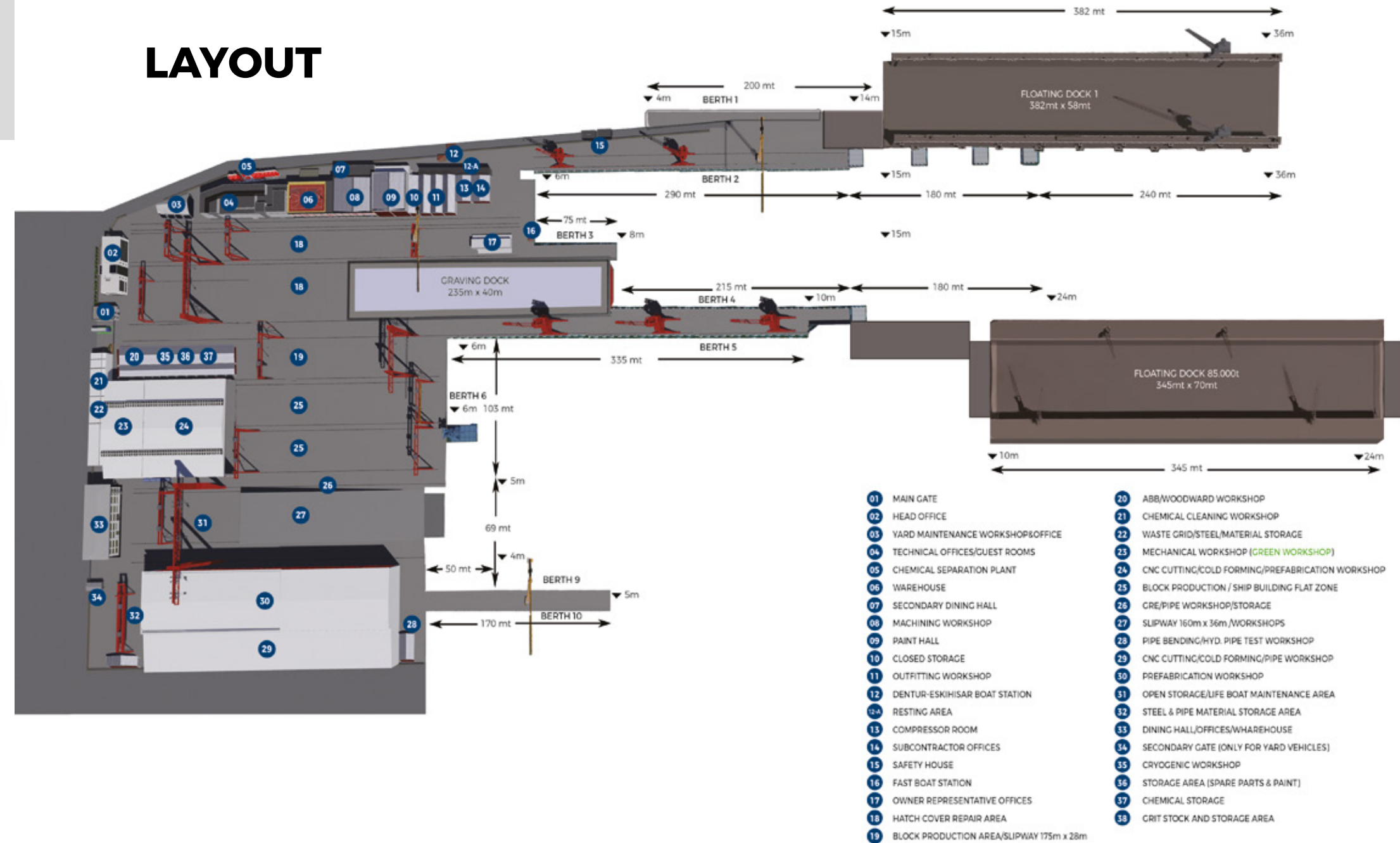


# LOCATION

- Conveniently located at the entrance of Izmit Bay, Yalova
- Approximately 30 nautical miles from the Bosphorus Strait
- Strategically positioned in a key industrial hub, near major ports, airports, and Istanbul city center
- Osmangazi Bridge offers a fast and direct connection from Istanbul and its airports to Yalova, significantly reducing travel time by avoiding the long drive around the bay
- Boat transfer service is provided by Besiktas Shipyard between our yard and Eskihisar (Gebze). Operates at scheduled times during the day and is exclusively available for our clients, crew, and visitors.



# LAYOUT





# FACILITIES

- 212.000 sqm total area
- 57.000 sqm closed area
- Wet berth up to 36 m. depth
- One panamax size graving dock, and two floating docks with the sizes: 382 x 58m ; 345 x 70m
- In-house mechanical workshops
- 180x36 m. slipway with 400 mt. gantry crane
- 100 mt floating crane
- 100 mt mobile jib crane



Grande Mediterraneo from Grimaldi Group



Well developed crane facilities at berths

	DOCK I	DOCK II	DOCK III
Details	Graving Dock	Floating Dock No.1	Floating Dock Besiktas 85.000 T
Lifting Capacity	30.000 t.	72.000 t.	85.000 t.
LOA	235 m	382 m	345 m
Inner width between walls	40 m	58 m	70 m
Max. Draft	6.2 m	8.2 m	11 m
Height of Keel Blocks	1.65 m	1.9 m	1.85 m



# 3.100 m WET BERTHS WITH CRANES UP TO 200 TONS

CRANES		BERTHS
REPAIR AREA	NEW BUILDING AREA	
<b>Berth 2</b>	<b>Slipway 1</b>	<b>Berth 1</b>
1 x 40 mt Portal Crane	2 x 150 mt Gantry Crane	150 m x 4-8 m
1 x 16 mt Portal Crane	<b>Slipway 2</b>	<b>Berth 2</b>
1 x 10 mt Tower Crane	2 x 200 mt Gantry Crane	450 m x 8-20 m
<b>Berth 4/5</b>	2 x 20 mt Gantry Crane	<b>Berth 3</b>
1 x 30 mt Portal Crane	<b>Flat Zone 1</b>	75 m x 6-8 m
2x 16 mt Portal Crane	2 x 35 mt Gantry Crane	<b>Berth 4</b>
<b>Graving Dock</b>	2 x 35 mt Gantry Crane	290 m x 8-20 m
2 x 100 mt Gantry Crane	<b>Flat Zone 2</b>	<b>Berth 5</b>
1 x 10 mt Tower Crane	2 x 35 mt Gantry Crane	370 m x 7-12 m
<b>Floating Dock 1</b>	2 x 35 mt Gantry Crane	<b>Berth 9</b>
2x 45 mt Floating Dock Crane	1 × 100 mt Mobile Jib Crane	170 m x 3-8 m
2x 9 mt Floating Dock Crane	<b>New Building Pier</b>	<b>Berth 10</b>
<b>Floating Dock Besiktas 85.000 T</b>	1 x 10 mt Tower Crane	170 m x 3-8 m
2x 50 mt Floating Dock Crane	<b>Storage Area</b>	<b>Dock 1 Side</b>
2x 15 mt Floating Dock Crane	1 x 15 mt Gantry Crane	382 m x 15-36 m
<b>Hatch Cover Repair Area</b>		<b>Floating Dock Side Besiktas 85.000 T</b>
2 x 35 mt Gantry Crane		320 m x 20-36 m
2 x 35 mt Gantry Crane		
1 x 10 mt Tower Crane		
<b>Floating Crane</b>		
100 mt/25 mt Floating		





# STEEL PRODUCTION

- 23.000 sqm closed Steel Production
- 100 tons a day Steel Cutting Capacity
- Up to 14 tons Steel Renewal per day per ship in Shiprepairs



Bulbous bow replacement on container vessel from Hapag Llyod



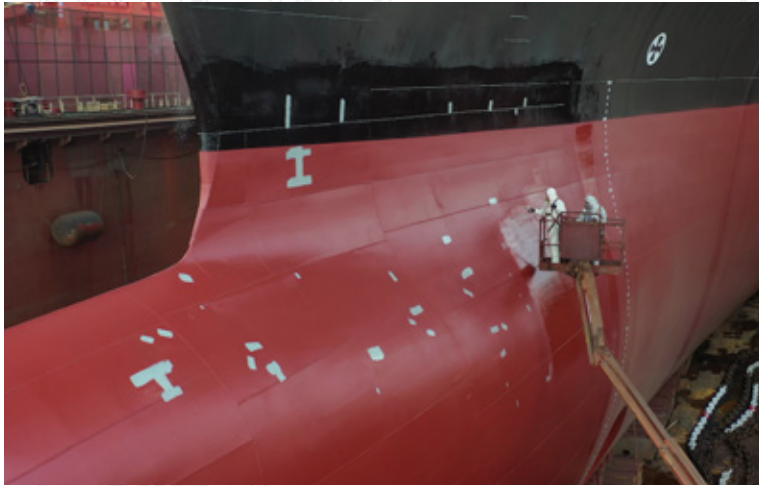


# BLASTING & PAINTING

- Closed blasting and painting halls with controlled climate
- Air supply system capacity up to 80 nozzles
- Hydroblasting capability up to 2.500 bars
- Metallizing capability

We have the capacity to perform **hydro-blasting** operations in two of our docks with the equipments currently available in the shipyard.

EQUIPMENT	QUANTITY
HDP 344 High Pressure Pump Unit	16
HDP 144 High Pressure Pump Unit	8
Dockmate	4
Dockboy	4
Spiderjet	4
Jetboy	1
Water Treatment System	1
Vacuum Unit	1
Several Accossories	8



Four repeated customers in the same view



M/V Hamburg from d'Amico and owned by Ligabue had been transformed with a unique silicone paint design.



# MECHANICAL WORKS

- In-house workshop for all mechanical and electrical works
- Engine Workshop
- Valve Workshop
- Outfitting Workshop
- Electrical Workshop
- Authorized Workshops
- Cryogenic Workshops
- Marine shaft workshop





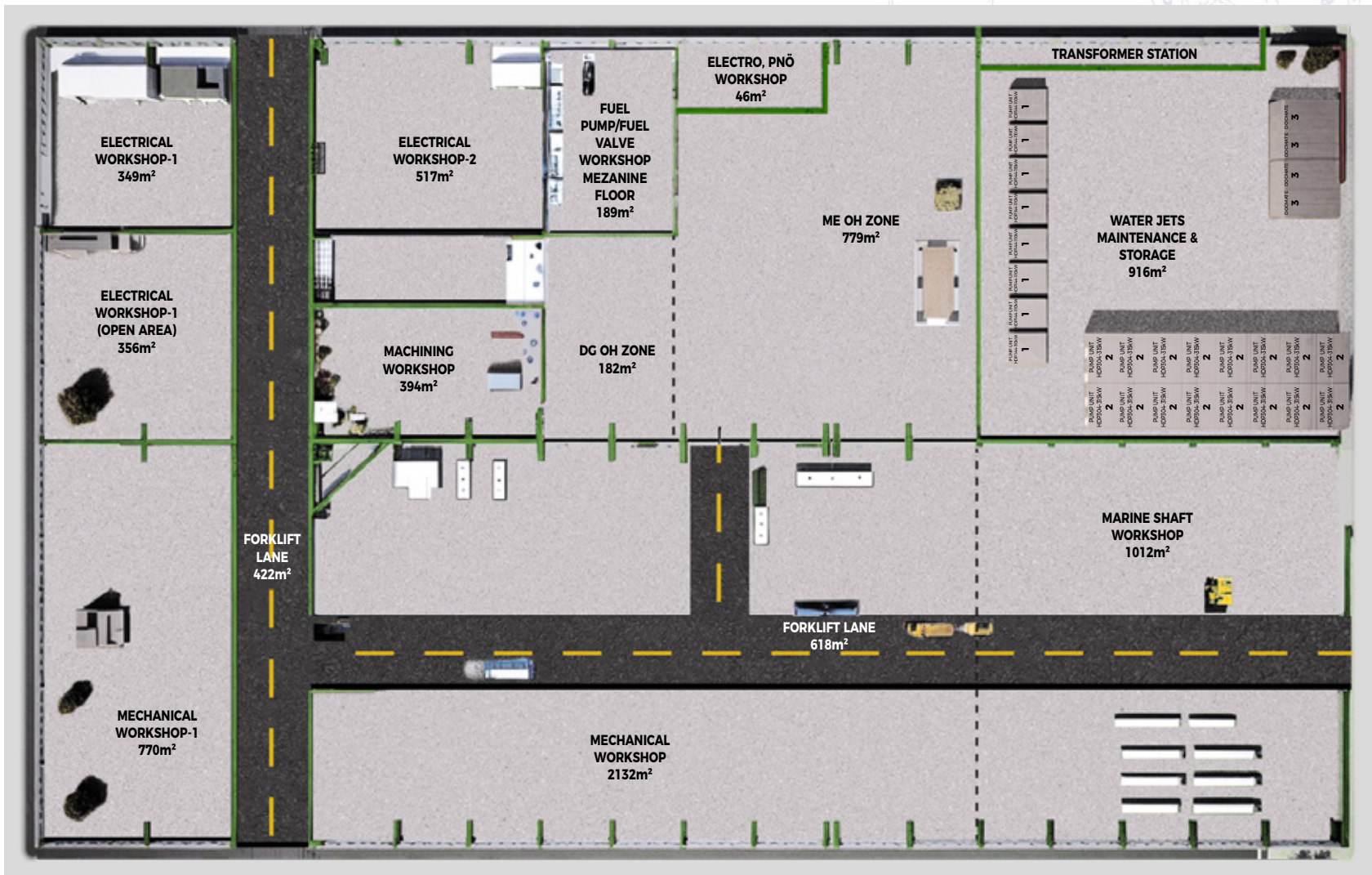
# ENLARGED WORKSHOPS

At Besiktas Shipyard, continuous improvement is at the core of our operations. To further strengthen our ship repair capabilities, we are making significant investments in our workshops, effectively doubling the overall capacity.

WORKSHOPS	AREAS (m <sup>2</sup> )
Steel & Prefabrication Workshop	4550
Pipe Workshop	2700
Mechanical Workshop 1	770
Mechanical Workshop 2	2132
Main & Aux. Engine Workshop	779
Electrical Workshop	1222
Authorized Workshop / Accelaron & Woodward	200
Marine & Shaft Workshop	1012
SUS & GRE Pipe Workshop	380
Equipment Maintenance Workshop	711
Mechanical Workshop	5492
Water Jets Maintenance & Storage	916
Cryogenic Workshop	972
Chemical Cleaning Workshop	470
TOTAL AREA	16.814 m <sup>2</sup>

These upgrades allow us to handle more complex projects with greater speed, precision, and flexibility, delivering the highest standards of quality for every vessel.

# MECHANICAL WORKSHOP





# CRYOGENIC WORKS

- First GTT-Certified shipyard in the region
- Capacity to serve 3 LNG vessels simultaneously
- Fully dedicated cryogenic zones
- Strict regulatory compliance
- Advanced HSE Protocols
- Specialized equipment & trained personnel





# SUSTAINABILITY

At Besiktas Shipyard, we are committed to building a sustainable future through clean energy, resource efficiency, and responsible operations.

- Solar Power: With rooftop panels on the shipyard and our 220-acre solar plant in Balıkesir, we generate more than twice the energy we consume annually.
- Clean Production: Water blasting technology reduces dust emissions and grit use in surface preparation.
- Carbon Footprint: We calculate and monitor our annual emissions to guide reduction strategies.
- Waste Management: At our waste reception facility, we segregate waste and direct it to recycling in line with environmental regulations.
- Energy Efficiency: We continuously improve processes to save energy and resources, with an ISO 50001-certified energy management system.



# SAFETY & QUALITY ASSURANCE

- Continuous improvement on safety awareness
- Internal training activities in accordance with the industry requirements





# GUEST HOUSE SERVICES

- 21 Guest rooms
- Basketball & mini football court
- Breakfast and dinner services
- All above services are complimentary





# SHIP BUILDING REFERENCES

**To date, Besiktas Shipyard has successfully delivered 36 specialized shipbuilding projects.**

- Dina Polaris
  - Type: Multi Purpose Platform Supply Vessel
  - Size: 6,053 DWT
  - Buyer: Myklebusthaug – Norway
  - Length Overall (LOA): 98.9 m
  - Length Between Perpendiculars (LBP): 88.6 m
  - Breadth: 21 m



- M / V Inter Caledonia
  - Type: Live Fish Carrier
  - Size: 3.036 DWT – 2212 CBM
  - Buyer: Intership – Norway
  - Length Overall (LOA): 69.8 m
  - Length Between Perpendiculars (LBP): 66 m
  - Breadth: 17 m



- Thor Freyja
  - Type: Seismic Support Vessel
  - Size: 1,750 DWT
  - Buyer: Thor, Faroe Islands / PGS, Norway
  - Length Overall (LOA): 64.4 m
  - Length Between Perpendiculars (LBP): 57.6 m
  - Breadth: 14.5 m



- M / T Scali del Teatro
  - Type: LPG Carrier
  - Size: 3.600 DWT – 3.300 CBM
  - Buyer: Gas & Heat – Italy
  - Length Overall (LOA): 88.4 m
  - Length Between Perpendiculars (LBP): 82.5 m
  - Breadth: 15 m



- Besiktas GH
  - Type: LPG / Ethylene Carrier
  - Size: 9.214 DWT – 9000 CBM
  - Buyer: Galata Gas Shipping
  - Length Overall (LOA): 123 m
  - Length Between Perpendiculars (LBP): 115.5 m
  - Breadth: 19 m



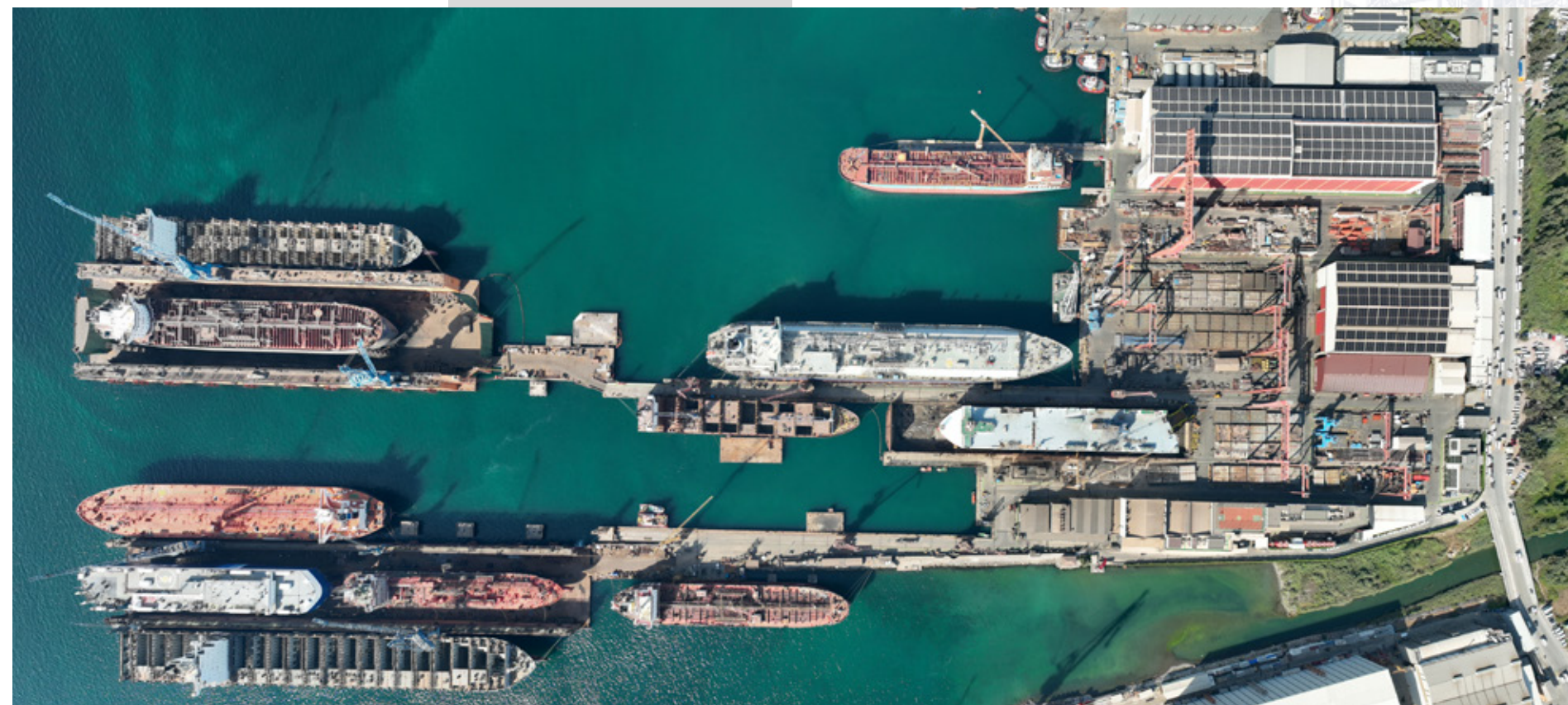
- Damia Desgagnes
  - Type: Asphalt / Bitumen / Oil Product Carrier
  - Size: 14.719 DWT
  - Buyer: Transport Desgagnes Inc. / Quebec, CANADA
  - Length Overall (LOA): 135 m
  - Length Between Perpendiculars (LBP): 129.24 m
  - Breadth: 23.5 m







By covering our workshop rooftops with solar panels, we are reducing our carbon footprint.





# REFERENCES



Oil rig Scarabeo 9 from Saipem





Cumhuriyet Mh. Hakkı Kan Cd. No. 52 Altınova 77700 Yalova, Türkiye  
P: +90 226 461 51 51 F: +90 226 461 51 66  
marketing@besiktasshipyard.com

[www.besiktasshipyard.com](http://www.besiktasshipyard.com)

[in/besiktasshipyard](https://www.linkedin.com/company/besiktasshipyard) [@/besiktasshipyard](https://www.instagram.com/besiktasshipyard) [@BesiktasShipyard](https://www.facebook.com/besiktasshipyard) [f/besiktasshipyard](https://www.facebook.com/besiktasshipyard)

 **BesiktasShipyard**