

 **BesiktasShipyard**

**HOME
PORT
OF
GLOBAL
MAJORS**



SHIPREPAIR

- One of the most active ship repair yards in Europe
- Large area for hatch cover repairs
- High customer satisfaction
- High repeat customer rate
- 150 ship-repair projects per annum



Cruise Ships & Ropax Vessels from Celestyal, Minoan Lines & Clipper

SHIPBUILDING

- Specialized in commercial and offshore vessels up to intermediate size
- Experienced shipbuilding organization from design to delivery
- Capacity to deliver 8 ships per annum



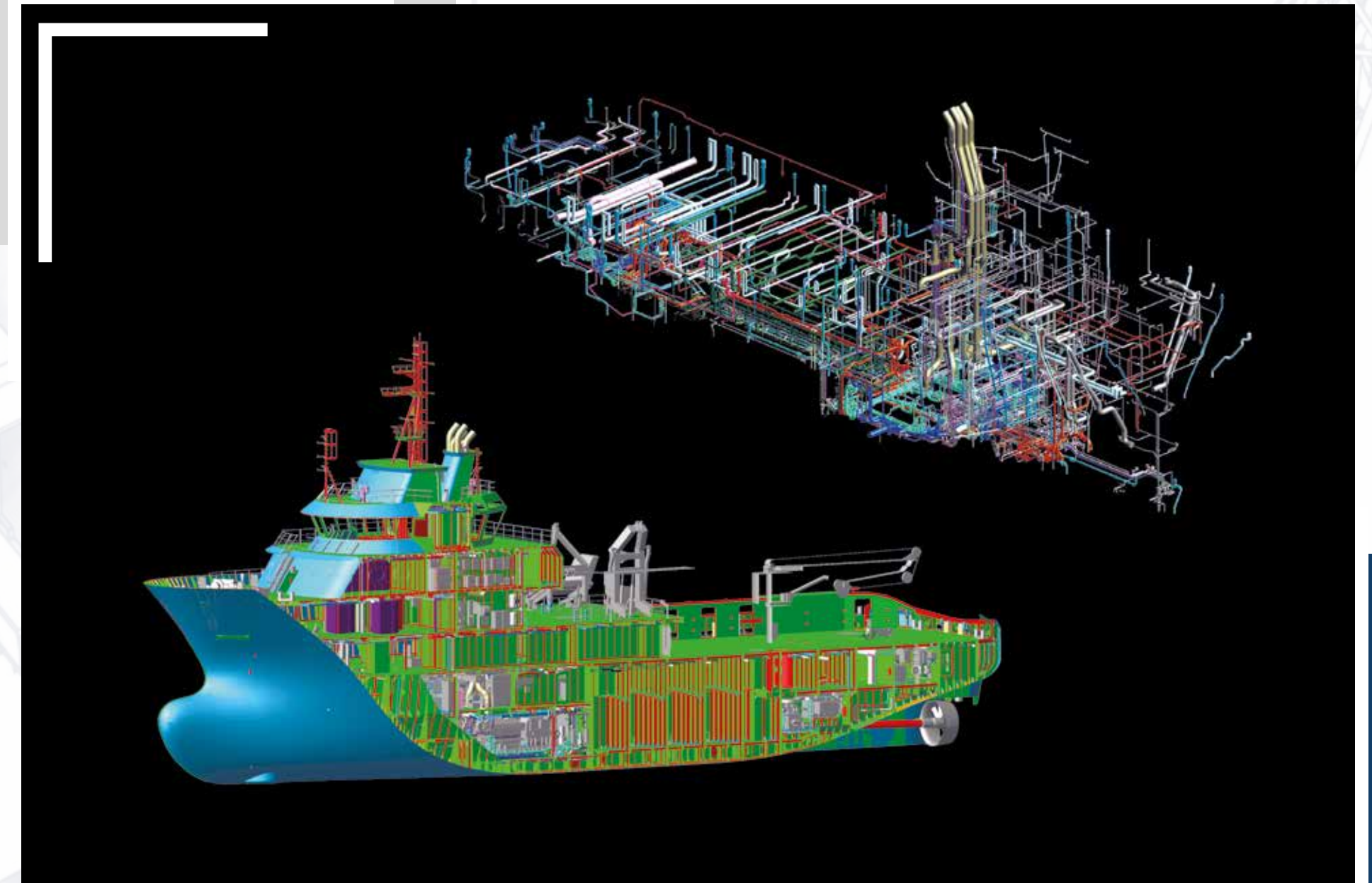
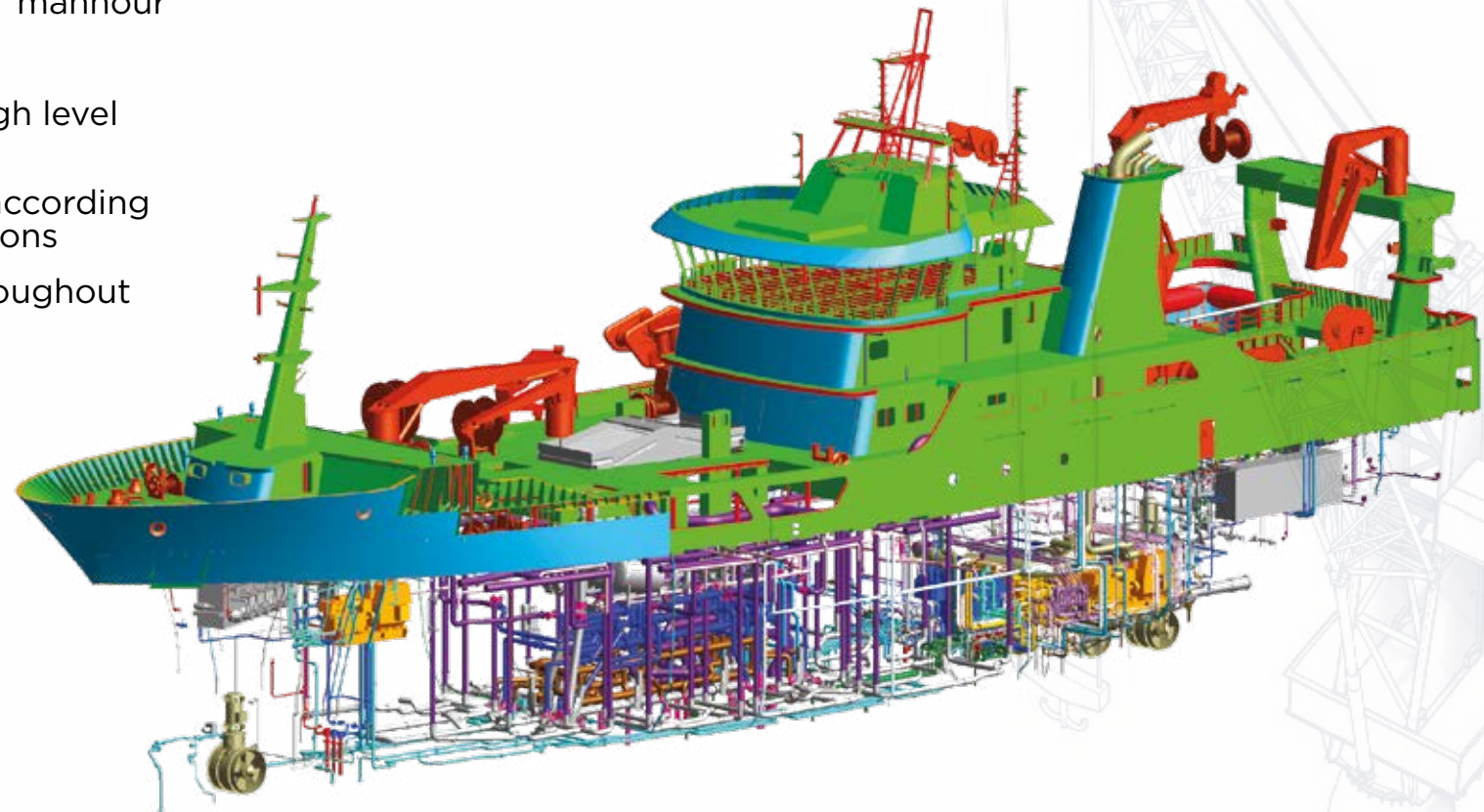
Damia Desgagnes built in 2017 for Canadian owners Groupe Desgagnés, Polar Class 15000 wt Bitumen Tanker, LNG type Main Engine, Gens and Boilers



Dina Polaris built in 2017 for Norwegian Owners Myklebusthaug Management, Multipurpose Platform Supply / Drilling Vessel Ice Class 1A and, at 99m in length with a 21m beam. She is one of the largest geotechnical drilling vessels in the industry.

DETAILED DESIGN / MODELING

- Minimize building time / manhour
- Minimized reworks
- Better quality due to high level work-shop productions
- Optimizing the design according to the Client's expectations
- Lightweight control throughout the design process



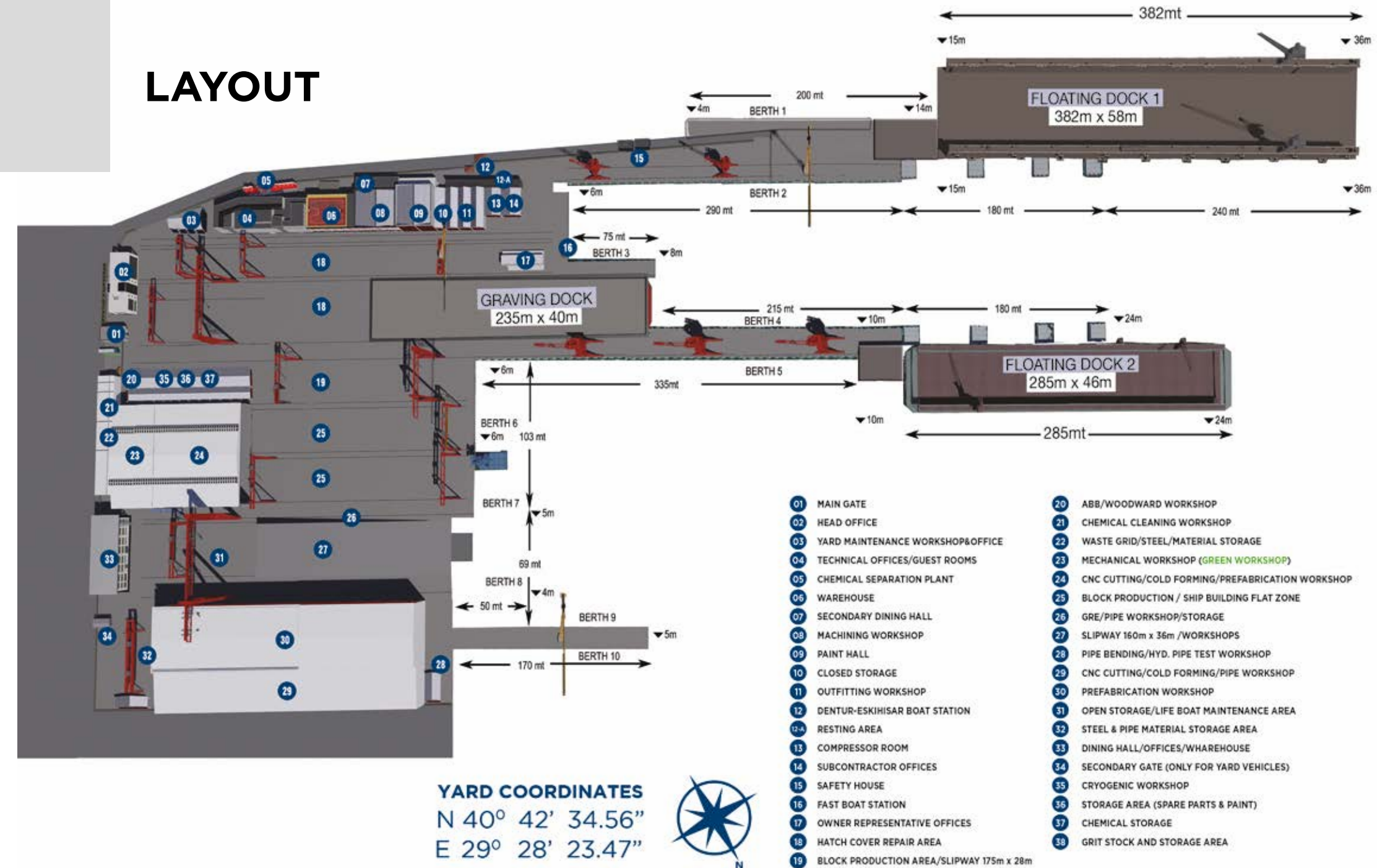


LOCATION

- Conveniently located in the entrance of Izmit Bay
- 30 nautical miles distance from Bosphorus straits
- Suitable location in the industrial hub close to major ports, airports and Istanbul City
- New Bridge on Izmit Bay connecting two sides



LAYOUT



FACILITIES

- 185.000 sqm total area
- 50.000 sqm closed area
- 2.800 m. Wet Berth up to 30 m. depth
- One panamax size graving dock, and two floating docks with the sizes: 382 x 58m ; 285 x 46.5m
- In-house Mechanical Workshops
- 180x36 m. Slipway with 400 mt. Gantry Crane
- 100 mt Floating Crane
- 100 mt Mobile Jib Crane



Grande Mediterraneo from Grimaldi Group

	DOCK I	DOCK II	DOCK III
Type	Graving Dock	Floating Dock No.2	Floating Dock No.1
Lifting Capacity	30.000 t.	32.000 t.	72.000 t.
LOA	235 m	285 m	382 m
Inner width between walls	40 m	46.5 m	58 m
Max. Draft	6.20 m	6.50 m	8.0 m
Height of Keel Blocks	1.65 m	1.70 m	1.80 m



Well developed crane facilities at berths

2.800 m WET BERTHS WITH CRANES UP TO 200 TONS

CRANES		BERTHS
REPAIR AREA	NEW BUILDING AREA	
Berth 1	Slipway 1	Berth 1
1 x 35 mt Jib Crane	2 x 150 mt Gantry Crane	150 m x 4-8 m
2 x 16 mt Jib Crane Berth	2 x 35 mt Gantry Crane	Berth 2
1 x 45 mt Jib Crane	Slipway 2	450 m x 8-20 m
1 x 16 mt Jib Crane	2 x 200 mt Gantry Crane	Berth 3
1 x 10 mt Tower Crane	2 x 20 mt Gantry Crane	75 m x 6-8 m
Graving Dock	Flat Zone 1	Berth 4
2 x 100 mt Gantry Crane	2 x 35 mt Gantry Crane	390 m x 8-20 m
1 x 35 mt Jib Crane	2 x 35 mt Gantry Crane	Berth 5
1 x 10 mt Tower Crane	Flat Zone 2	340 m x 6-9 m
Floating Dock 1	2 x 35 mt Gantry Crane	Berth 9
2x 45 mt Jib Crane	2 x 35 mt Gantry Crane	150 m x 3-6 m
Floating Dock 2	1 x 100 mt Mobile Jib Crane	Berth 10
2 x 15 mt Jib Crane	New Building Pier	150 m x 3-6 m
Hatch Cover Repair Area	1 x 10 mt Tower Crane	Dock 2 Side
2 x 35 mt Gantry Crane		285 m x 8-24 m
2 x 35 mt Jib Crane		Dock 3 Side
1 x 10 mt Tower Crane		382 m x 15-36 m
Floating Crane		
100 mt / 25 mt Floating		



Spacious hatch cover landing area

STEEL PRODUCTION

- 23.000 sqm closed Steel Production
- 100 tons a day Steel Cutting Capacity
- Up to 14 tons Steel Renewal per day per ship in Shiprepairs



Bulbous bow replacement on container vessel from Hapag Llyod



BLASTING & PAINTING

- Closed blasting and painting halls with controlled climate
- Air supply system capacity up to 80 nozzles
- Hydroblasting capability up to 2.500 bars
- Metallizing capability



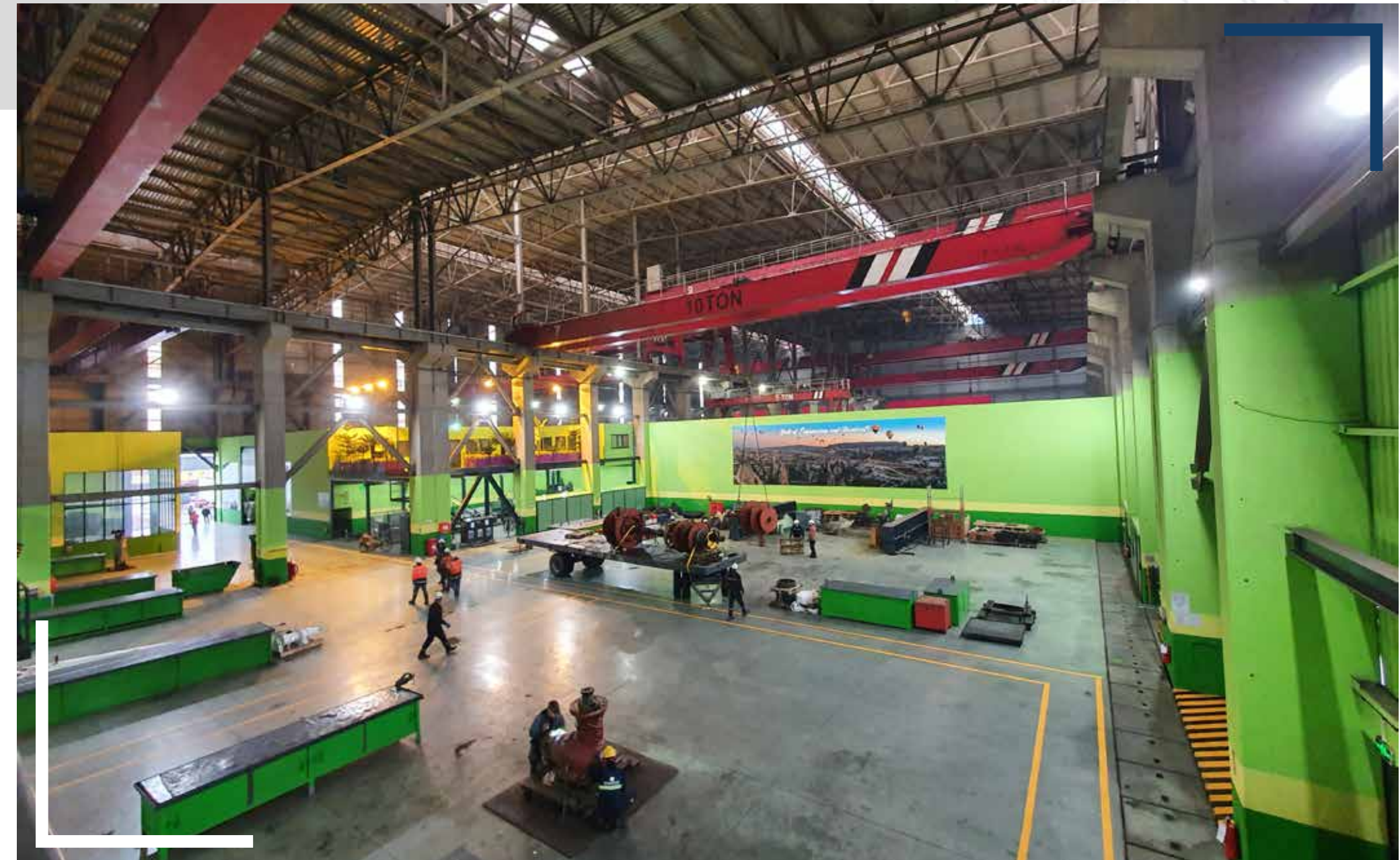
Four repeated customers in the same view



M/T Vallermosa from Montanari, silicone paint application

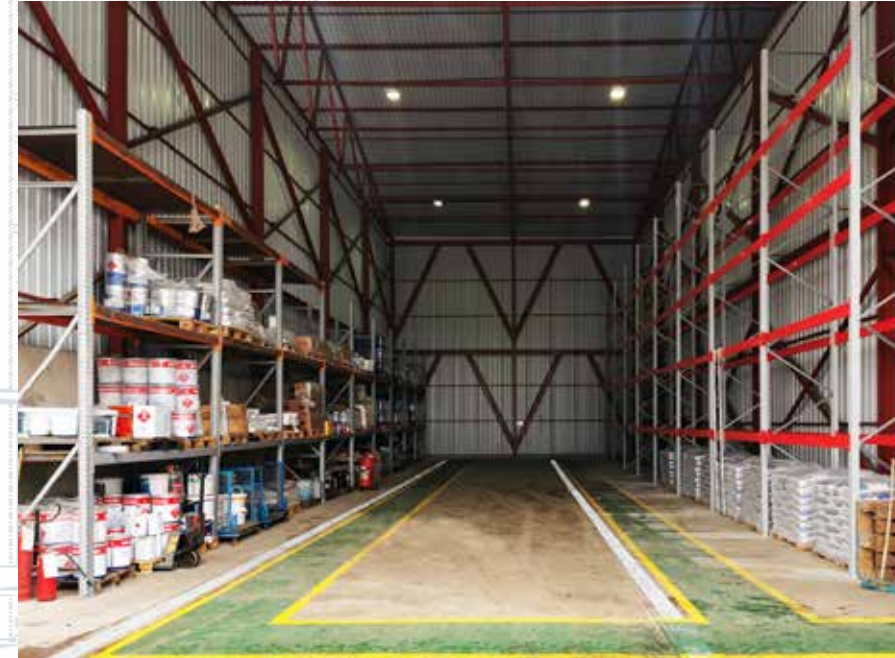
MECHANICAL WORKS

- In-house workshop for all mechanical and electrical works
- Engine Workshop
- Valve Workshop
- Outfitting Workshop
- Electrical Workshop
- Authorized Workshops
- Cryogenic Workshops



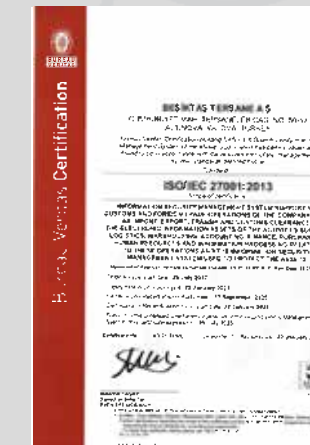
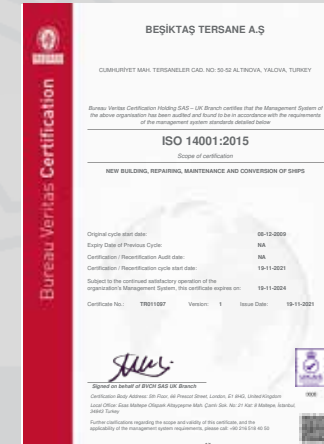
STORAGE

3.600 sqm closed storage areas
to keep consumables, stock material,
equipment and spare parts



SAFETY & QUALITY ASSURANCE

- Continuous improvement on safety awareness
- Internal training activities in accordance with the industry requirements



GUEST HOUSE SERVICES

- 21 Guest rooms
- Basketball & mini football court
- Breakfast and dinner services
- All above services are complimentary



GLOBAL REFERENCES



Oil rig Scarabeo 9 from Saipem



Cumhuriyet Mh. Hakkı Kan Cd. No. 52 Altınova 77700 Yalova, Türkiye
P: +90 226 461 51 51 F: +90 226 461 51 66
marketing@besiktasshipyard.com

www.besiktasshipyard.com

[in/besiktas-shipyard](https://www.linkedin.com/company/besiktas-shipyard) [@/besiktasshipyard](https://www.instagram.com/besiktasshipyard) [@BesiktasShipyard](https://www.youtube.com/channel/UCB8s8s8s8s8s8s8s8s8s8s8) [f/besiktasshipyard](https://www.facebook.com/besiktasshipyard)

 **BesiktasShipyard**